

Upcoming Events

- Community Talent Show
- Student Art Show
- Dinner & Auction
- 8th Grade Promotion
(watch website for more information)

Volunteer Opportunities

We encourage you to volunteer at the Brinnon School. Volunteer forms are available on the website or at the school.

Ways to be involved include:

- Read with a student
- Become a math tutor
- Read and discuss a student's writing
- Chaperone a field trip
- Help with office tasks
- Play a learning game with a preschool student

Please visit our website at www.bsd46.org for more information about your local school.

Board of Directors: Bill Barnet, Joe Baisch, Mary Fickett, and Shirley Towne.

District Superintendent: Patricia Beathard

**Building On Our Tradition
Every Vote Counts!**

Brinnon School Dist #46
46 Schoolhouse Road
Brinnon, WA 98320

Postal Patron
Brinnon, WA 98320

Brinnon School District #46



“A Great Place to Learn”

Replacement of Expiring Levy for Educational Programs & Operations

This Replacement for the expiring Educational Programs & Operations Levy is *not* a new levy. It is a replacement levy for the one expiring in 2022. It supplements inadequate State and Federal funding. A levy, by state design, provides for local citizen input.

NON-PROFIT ORG.
U.S. POSTAGE
PAID
PERMIT No. 2
Brinnon, WA 98320

What is the Levy and the Levy Rate?

In 2023, the Brinnon School District is seeking a total levy amount of \$327,395 - **no increase from the voter approved 2022 levy amount.** This is estimated at \$0.92 per \$1,000 of assessed valuation. In 2024, the total levy amount will be \$337,217, which is estimated at \$0.91 per \$1,000 of assessed valuation.

What Does the Levy Fund or Support?

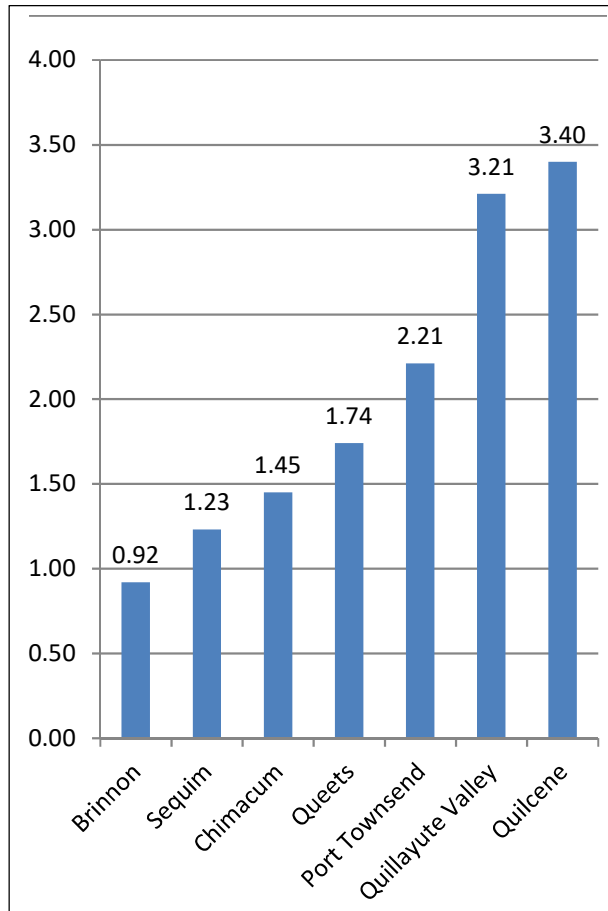
- Breakfast, lunch, snack and Fresh Fruits and Vegetables programs
- Building improvements, maintenance & repairs
- Utility and other operating expenses
- Required payments to neighboring high schools for 9th – 12th grade students coming from Brinnon
- Counseling – student & classroom support
- Underfunded educational programs
- Excess costs associated with grants the District has pursued

The Election and How to Vote

Ballots should be mailed to Brinnon residents on January 19. Ballots can be returned by mail or in a drop box.

- Mailed ballots need to be postmarked by 2/8/22. That generally means they should be taken to the post office by 2/7/22.
- Local drop boxes are located at the Brinnon Community Center and at the Quilcene Community Center.
- Ballots need to be in the drop box before 8 p.m. on 2/8/22.

How Do We Currently Compare to Neighboring Districts?



Rate per \$1,000 assessed valuation
-Source: Jefferson County tax abstract 21-22
-Districts have bond and capital levy rates included in the comparison data.
Our tax rate is considerably lower than the rate of neighboring districts.

Most Recent Levy Improvements

- Site preparation and installation costs for our new grant-funded modular building
- Ramp modifications to fit the new modular and re-installation.
- \$70,000 toward our new bus

Brinnon School Works Hard at Grants

2020-2021 School Year:

- \$185,000 Modular Building Grant
- \$50,000 Planning Grant toward applying for a Modernization Grant for asbestos abatement, new flooring, roof, and electrical upgrade including generator
- \$157,500 – Washington Reading Corps.

2021-2022 School Year to Date:

- \$2,813 Safe School Meals Grant – kitchen equipment and training
- \$200,000 Healthy Kids Healthy Schools grant for asbestos abatement and new floor in gym

2021-2022 Applications submitted – notification pending

- \$98,600 ADA Grant - to replace main entrances with new doors with openers
- \$176,691 Urgent Repair Grant to replace the exterior of the main building classrooms

Free Services to Brinnon School

- 3 days of counseling each week
- 4H After School Program
- Mobile Immunization Clinic & Dentist
- Expanded summer school